

# The Impact of the Pandemic on the Mental Health and Education of Youth

February 22, 2022

**Erica Fener Sitkoff, Ph.D.**  
Voices Executive Director

**Katie Landes, MSW**  
GSAN Director

Educate. Convene. Influence.



Mental Health  
Landscape

Mental Health  
Strategies

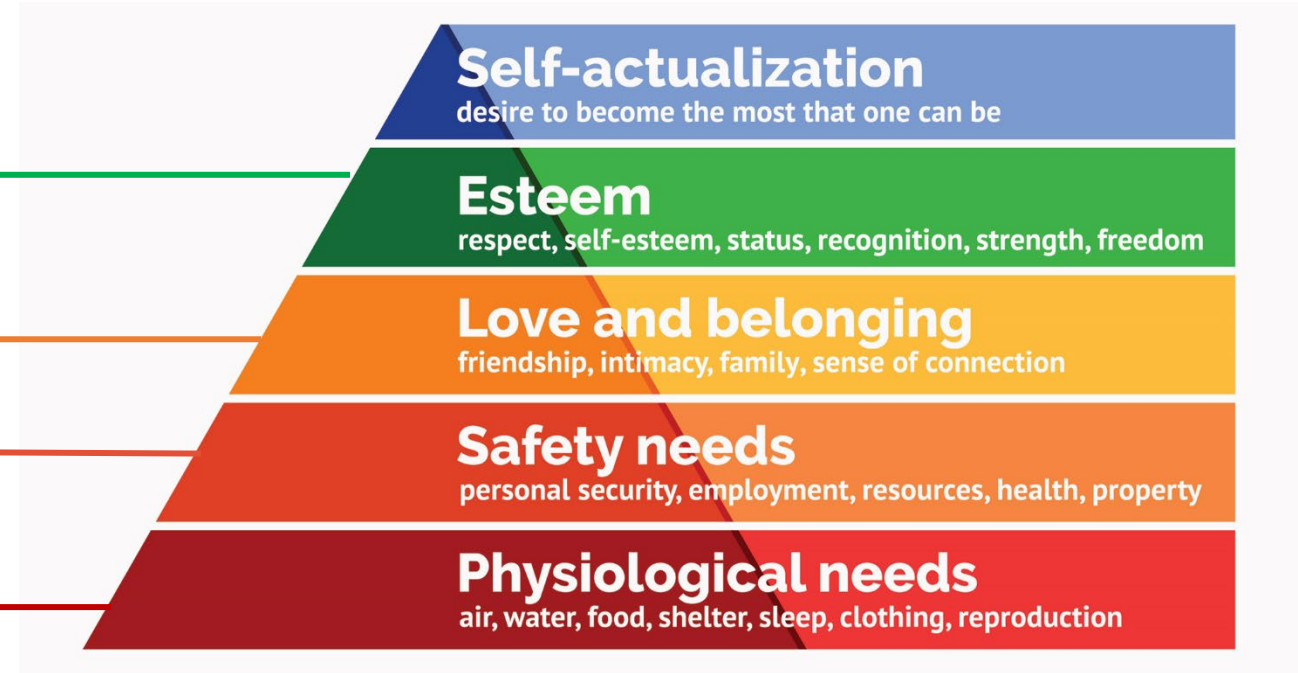
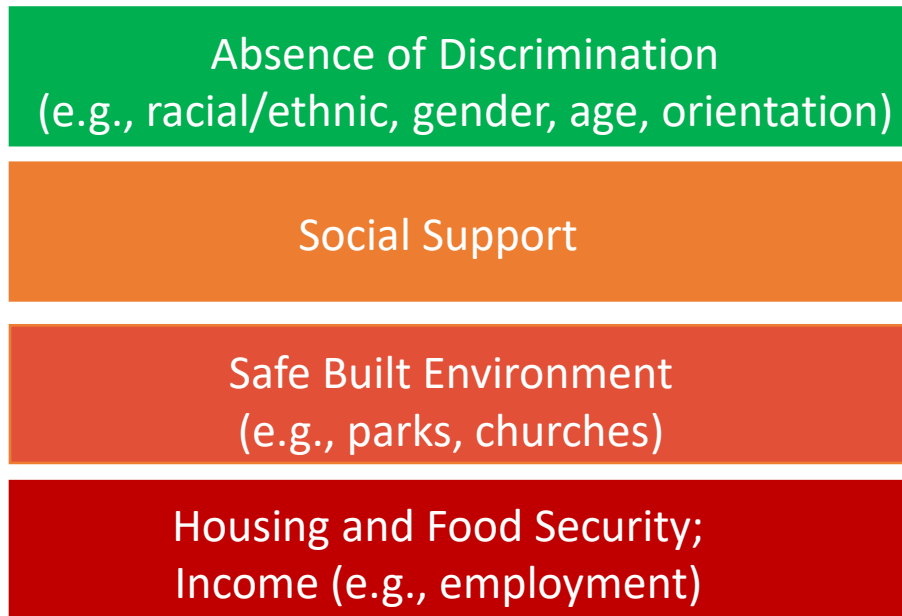
Education  
Landscape

Out-Of-School  
Time  
Landscape

Learning Loss  
Prevention  
Strategies

# MENTAL HEALTH LANDSCAPE: SOCIAL DETERMINANTS OF MENTAL HEALTH

## Social Determinants of Health (Mental Health)



**Maslow's Hierarchy of Needs**

# MENTAL HEALTH LANDSCAPE

100,000+

Students in 6-12th grade considered harming themselves in 2020

60

Counties do not have a pediatrician; 45 do not have a licensed psychologist or social worker

50 – 72

Percent of youth in juvenile detention (short-term and long-term) have a diagnosable mental illness

197,000

Kids without health insurance, the majority of whom are eligible for Medicaid or PeachCare for Kids

36,000

Students reported homeless in 2020

1 in 5

Children in poverty in Georgia, which is among the highest rates of child poverty in the nation

377,000

Children are food insecure

Educate. Convene. Influence.

# MENTAL HEALTH STRATEGIES

80 & 630

School-based health centers & Georgia Apex school-based mental health programs

25,000+

School personnel trained in mental health and trauma awareness

878,000

Social media feeds have engaged with the youth statewide mental health campaign, “Free Your Feels”

1.1M

School age children (K-12) received the P-EBT benefit during the 2020-2021 school term

\$2.6M+

Awarded to Georgia Department of Education to subgrant homelessness initiatives in 46 school districts

70,000

More of Georgia’s children will be enrolled in Medicaid, using SNAP data

Educate. Convene. Influence.



# LEARNING LOSS OR UNFINISHED LEARNING

**Significant loss of knowledge and skills due to extended gaps or discontinuities in a student's education**

## Nationally

- 5 months behind in mathematics
- 4 months behind in reading

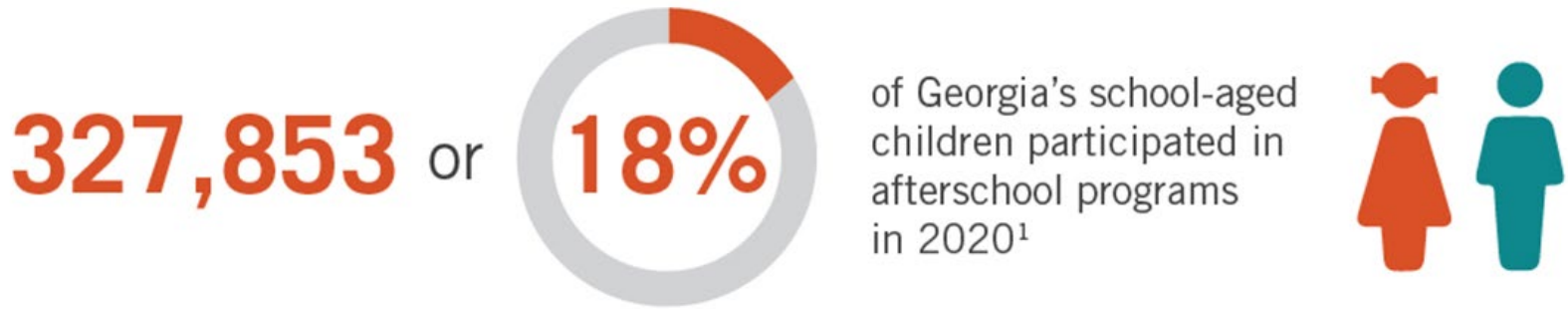
## Metro Atlanta

- 21,000 fewer students are on track for grade-level proficiency in **English Language Arts**
- 29,000 fewer students are on track for grade-level proficiency in **Math**

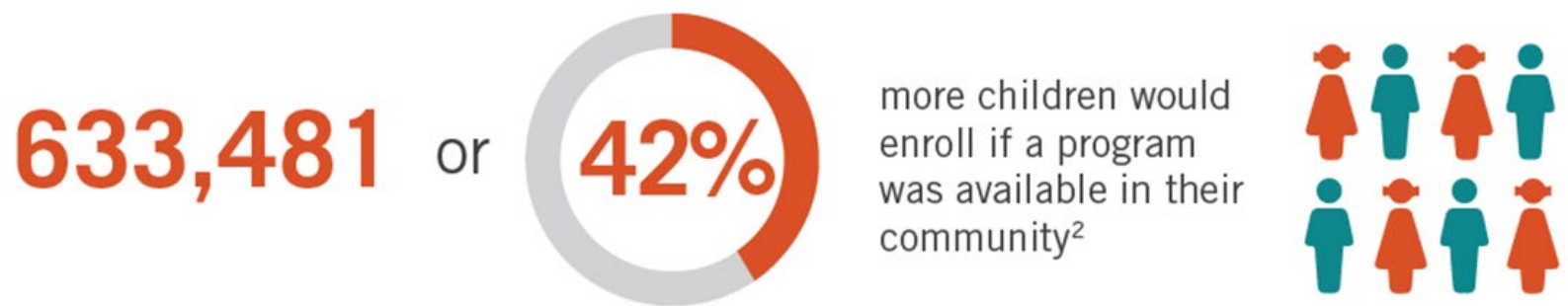


Educate. Convene. Influence.

# OUT-OF-SCHOOL TIME LANDSCAPE



*but*

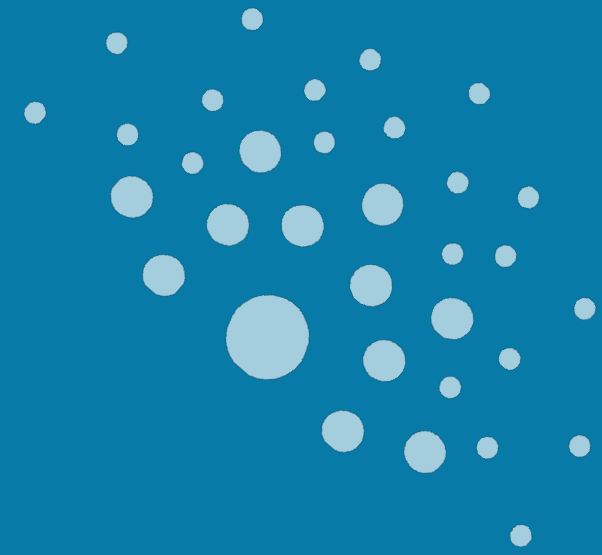


# LEARNING LOSS PREVENTION STRATEGIES

- School-community partnerships provide a vehicle for aligning services and leaning on and utilizing the expertise, resources, and capacity that exist in multiple sectors.
- Hands-on learning provided by certified teachers; encourage engaging learning in literacy, math, and STEAM
- Build upon existing infrastructures (i.e. 21st CCLC, Parks & Rec, BOOST grants)
- Include active, enrichment experiences, such as in the arts and sports, coding and robotic clubs, service-learning, college and workforce exploration, entrepreneurial experiences, and apprenticeships
- Provide positive adult supervision and relationships
- Coordinate services to meet youth and families' economic, health, food, wellness, and other needs



# Q&A



Educate. Convene. Influence.