



---

# USING TECHNOLOGY AS AN ECONOMIC DEVELOPMENT DRIVER

– *PEACHTREE CORNERS, GA* –



# A PLANNED COMMUNITY

---



# TECHNOLOGY PARK ATLANTA



## PEACHTREE CORNERS CENTRAL BUSINESS DISTRICT: FRAMEWORK



### TOWN CENTER NODE

*retail and entertainment focus*

### CORRIDOR REDEVELOPMENT

### INNOVATION HUB

### CONSERVATION GATEWAY

### CORRIDOR REDEVELOPMENT

### TOWN CENTER NODE

*housing and mixed-use focus*

# PEACHTREE CORNERS TOWN CENTER













# MULTI-USE TRAILS





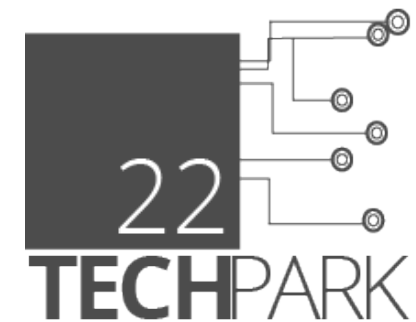


# WORK-FORCE HOUSING

---



# STARTUP INCUBATORS





---

**BUT WERE WE DOING EVERYTHING  
WE CAN?**

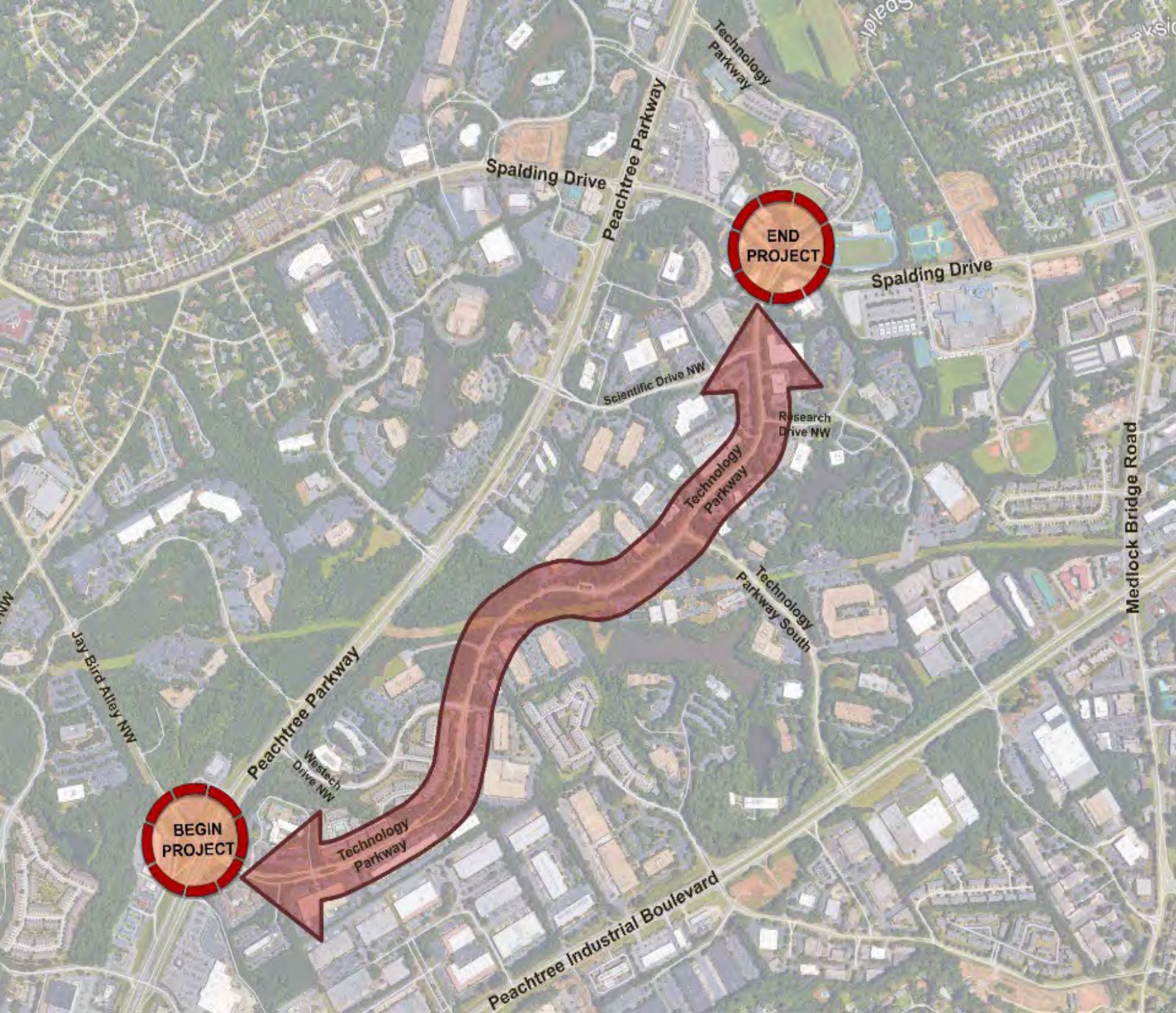




Could we leverage technology for even better economic development?

---

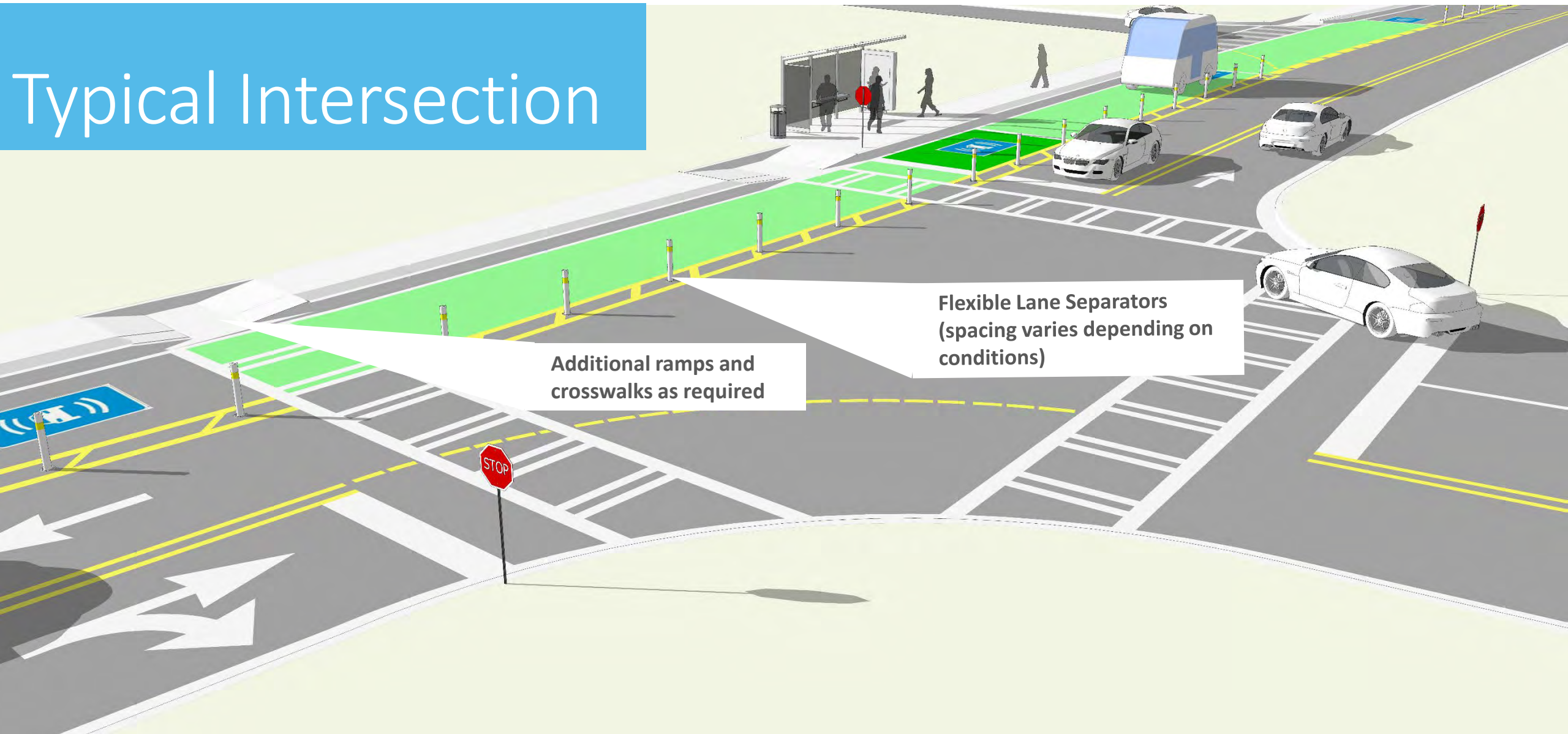




# Intelligent Mobility Innovation Lab



# Typical Intersection



Additional ramps and  
crosswalks as required

Flexible Lane Separators  
(spacing varies depending on  
conditions)

01

02

03

04

05







The image features a dark, high-angle view of a city at night, with numerous skyscrapers and buildings illuminated by their lights. Overlaid on this cityscape is a complex network of white lines and nodes, representing a 5G communication network. Various circular and hexagonal icons are scattered across the image, each containing a symbol related to technology and connectivity. These include a globe, a brain with a circuit, a cloud, a shopping cart, a Bitcoin symbol, a Wi-Fi signal, a laptop, a house, a car, a person, a location pin, a speech bubble, a mail envelope, a factory, a bar chart, a person in a hard hat, a person with a gear, and a person with a magnifying glass. The overall aesthetic is futuristic and tech-oriented.

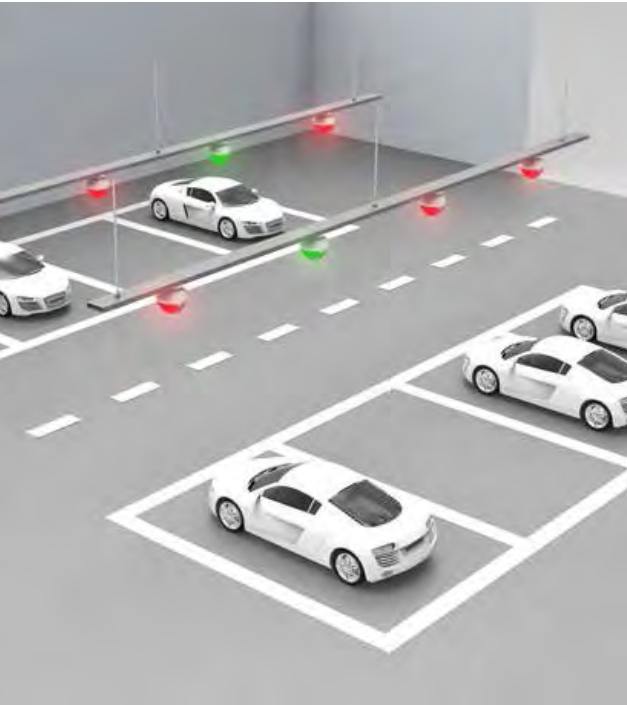
# 5G



# ADVANCED VEHICLE TESTING AND DEMONSTRATION

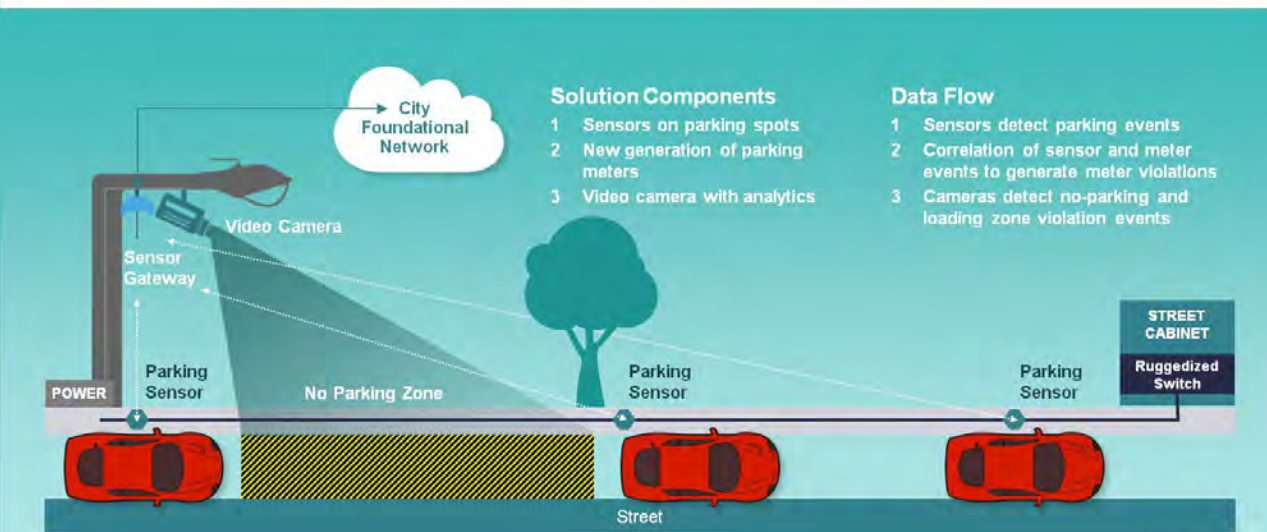




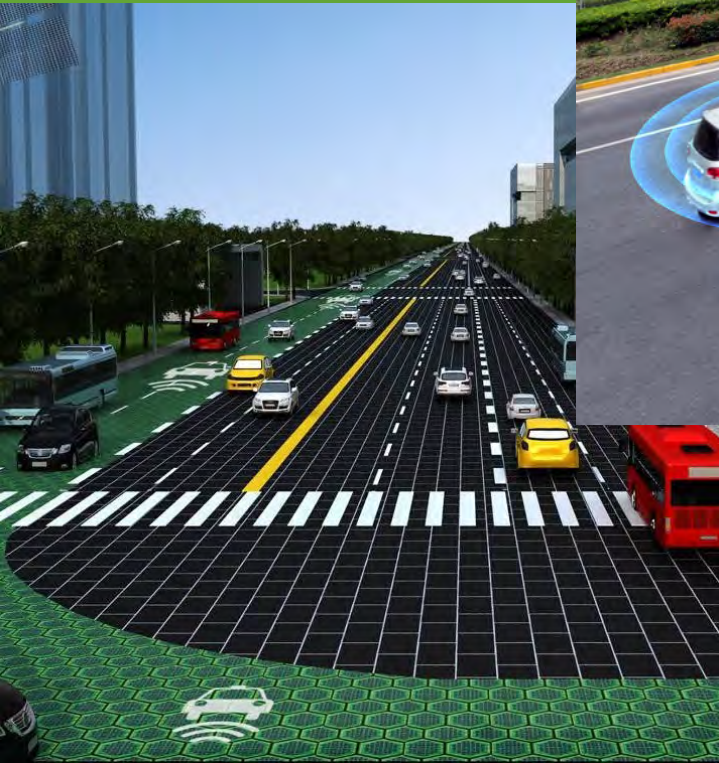


# SMART PARKING

## Smart+Connected City Parking: How It Works



# INNOVATIVE ROADWAYS





# Smart Mobility – Vehicle to Everything (V2X)

## **V2I** - Vehicle-to-Infrastructure.

Alerts vehicles to traffic lights, traffic congestion, road conditions, etc.  
Due 2022.

## **V2D** - Vehicle-to-Device.

Vehicles communicate with cyclists' V2D device and vice versa.  
Due 2018.

## **V2H** - Vehicle-to-Home.

Vehicles will act as supplement power supplies to the home.  
Due 2019.

## **V2G** - Vehicle-to-Grid.

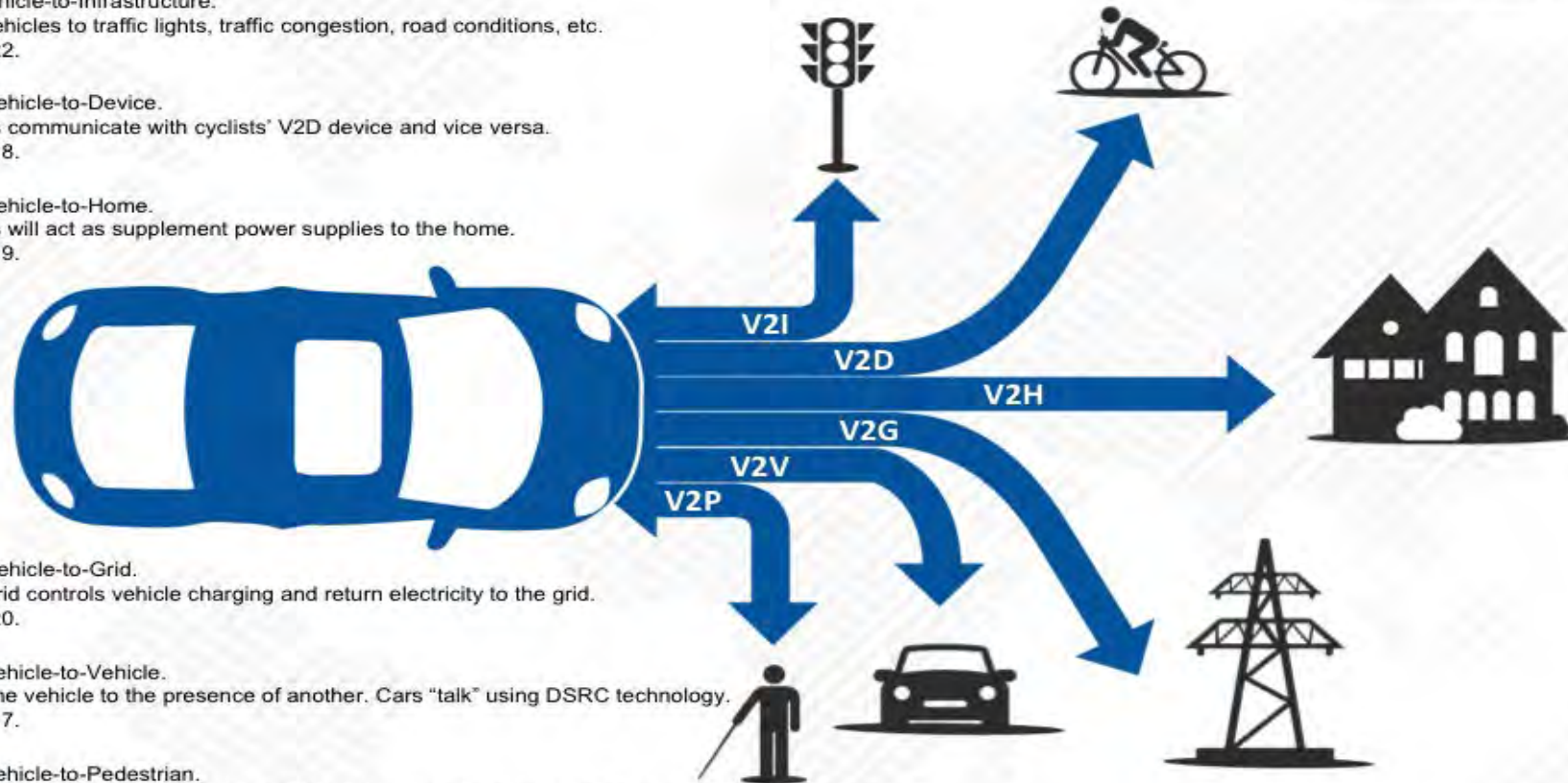
Smart grid controls vehicle charging and return electricity to the grid.  
Due 2020.

## **V2V** - Vehicle-to-Vehicle.

Alerts one vehicle to the presence of another. Cars "talk" using DSRC technology.  
Due 2017.

## **V2P** - Vehicle-to-Pedestrian.

Car communication with pedestrian with approaching alerts and vice versa.  
Due 2018.





CITY OF  
**Peachtree**  
**CORNERS**  
**Innovative & Remarkable**