

Building Smart Programs

People driven solutions enabled by technology and creative
partnerships

Joe Gillis & Langdon Sanders



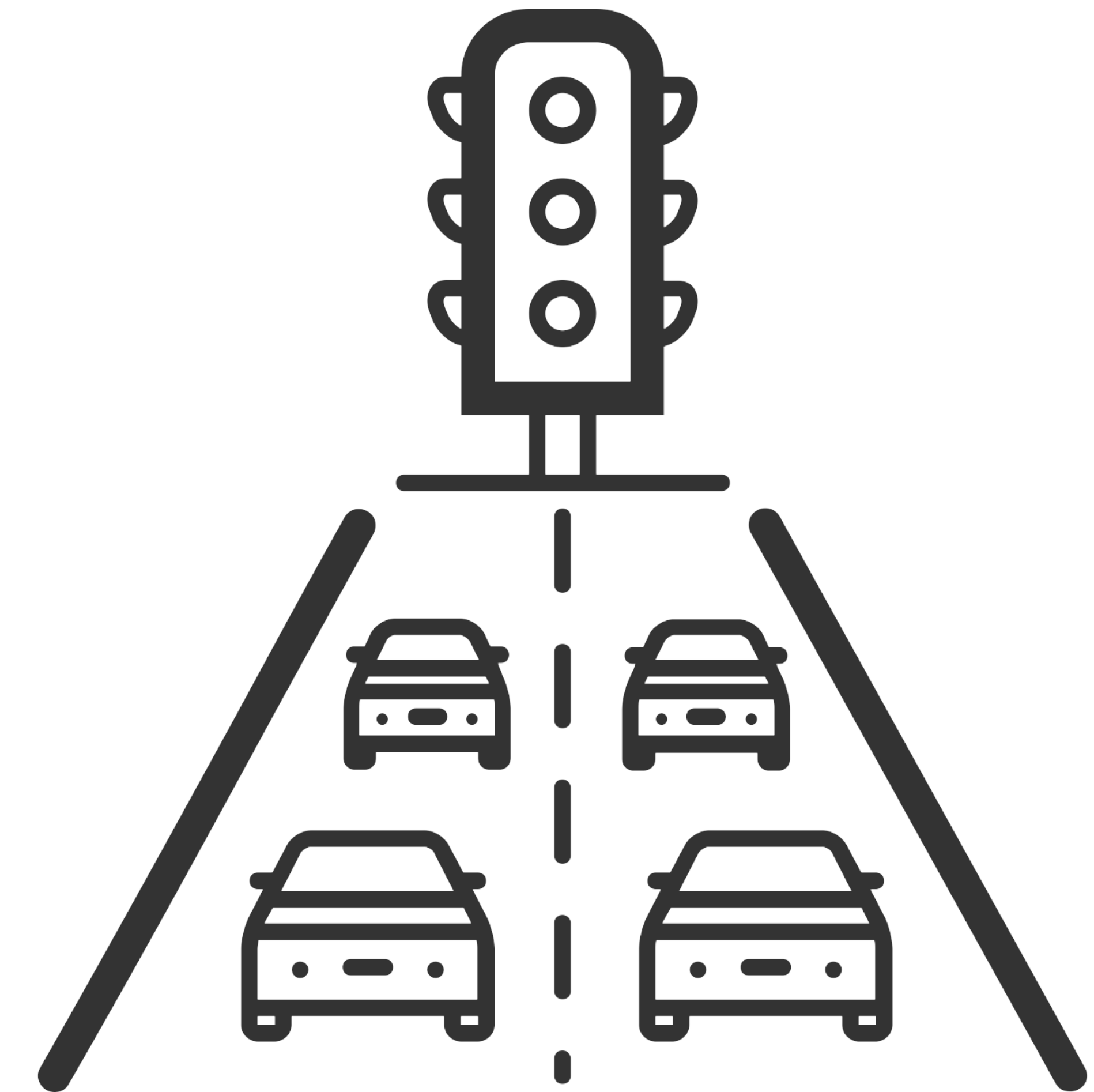
SANDY SPRINGS™
GEORGIA

Welcome and Introduction

- Speaker Introduction
- Session Overview
- Smart Cities Task Force

Adaptive (Smart) Signals **SCOOT**

- Sandy Springs in 2008 began implementation of adaptive traffic signals using **Split Cycle Offset Optimisation Technique (SCOOT - UK)**
- **SCOOT continuously measures traffic demand** on all approaches to intersections in a network and **optimizes the signal timings** minimize delay and stops.
- Timing changes are small, to avoid major disruption to traffic flows, and frequent, to allow rapid response to changing traffic conditions.
- By the early 2020 the **City will have over 100** intersections using this technology to adjust green times to increase throughput on all approaches proportionally



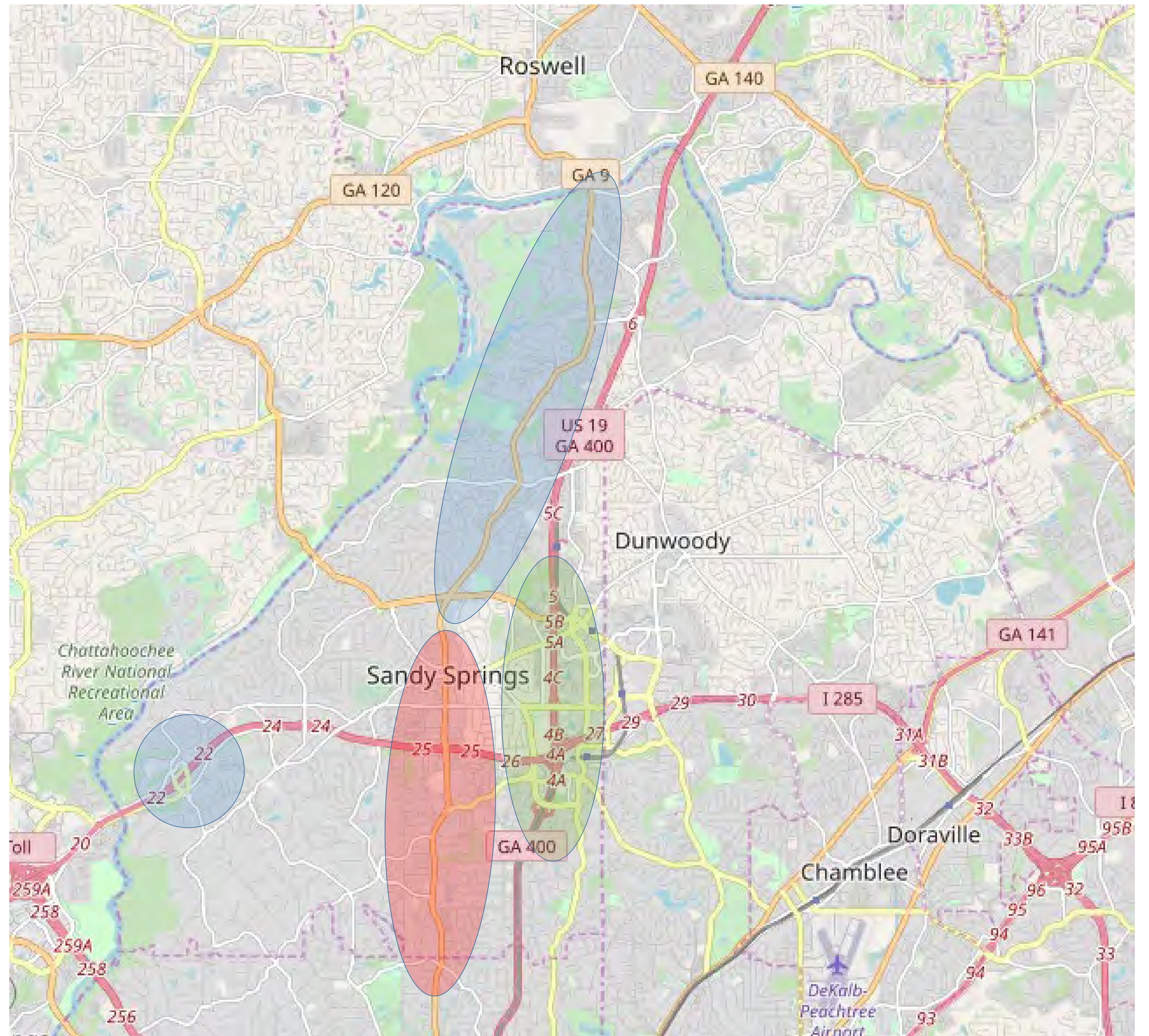
SCOOT Deployment Corridors By Year of Construction

2012

2018

2019

2020



Adaptive (Smart) Signal SCOOT

Field devices include 'puck-style' in-pavement detection, and wireless radio communication back to the traffic signal cabinet

In Cabinet



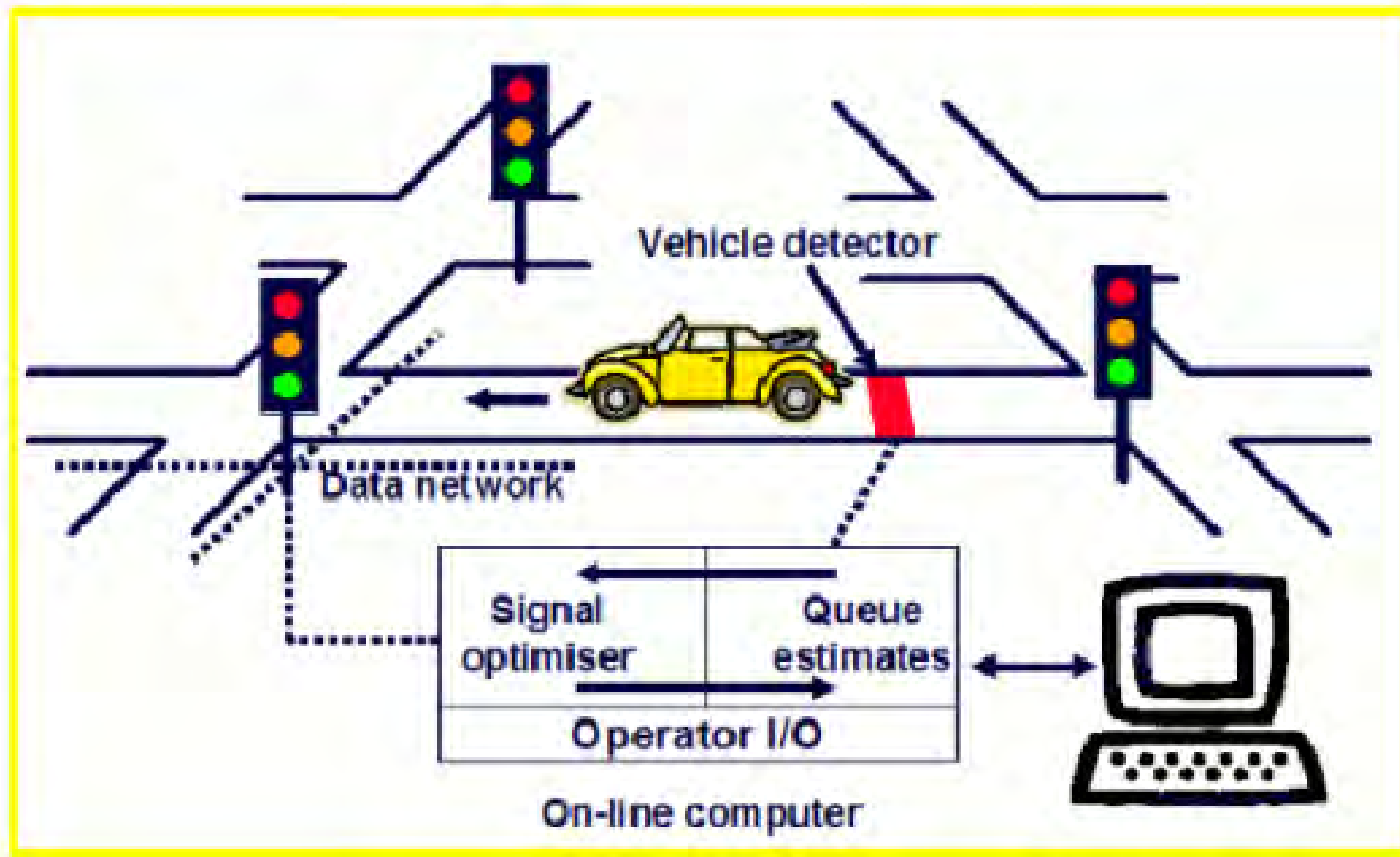
In Street



Mounted on pole



Adaptive (Smart) Signals & SCOOT



Travel Time Logging (BlueTOAD) Background

BlueTOAD is a wireless data collection system for travel time that captures data from blue tooth devices and transmits the data to a central server or cloud

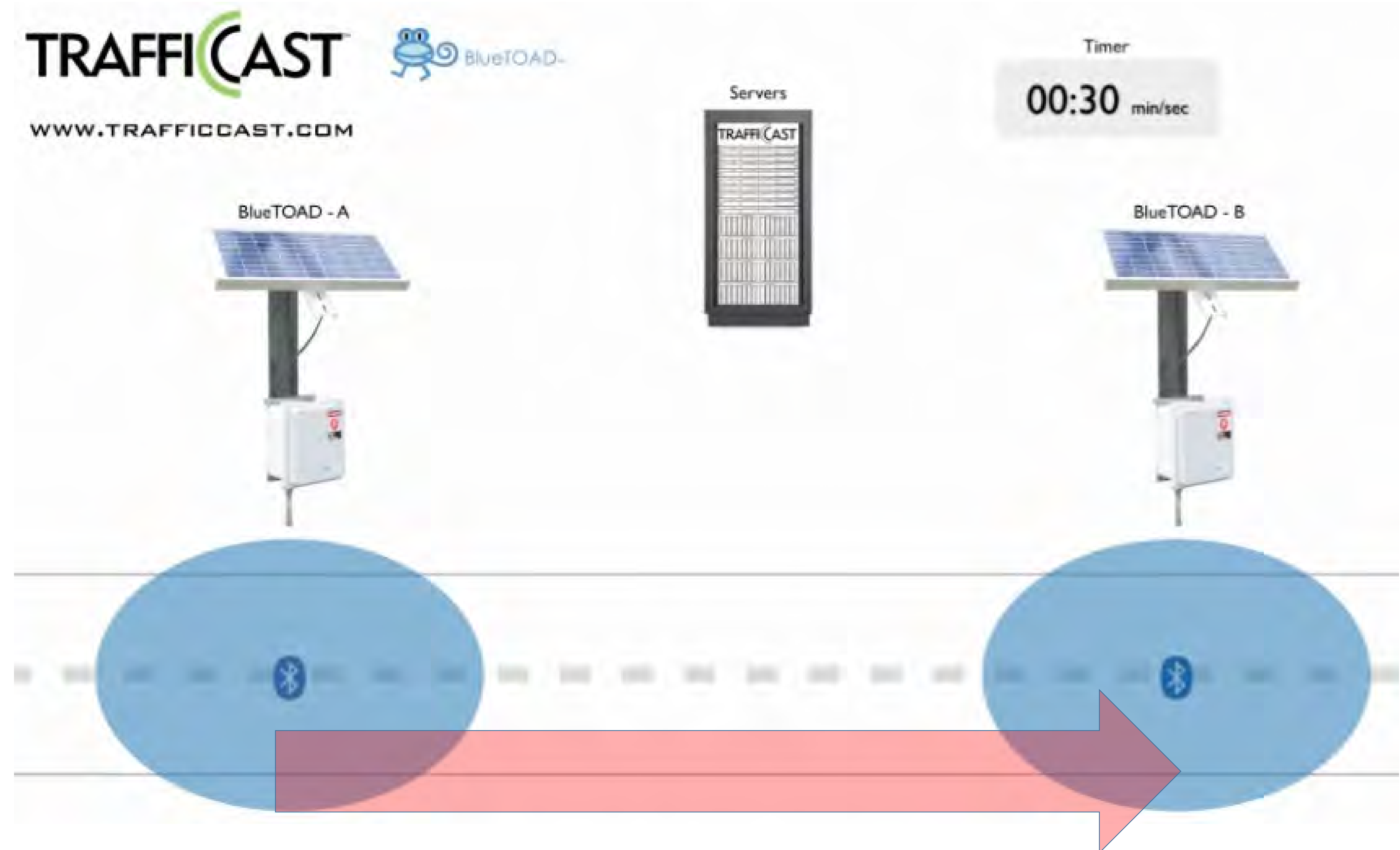
- Provides travel times between BlueTOAD devices
- Traffic Management Center (TMC) uses data to adjust signal timing and detect malfunctions in the system
- Newer BlueTOAD devices may be used for Origin/Destination studies
- Current and future BlueTOAD devices are, and will be, located at most of the same locations where SCOOT is being implemented across the City.



Travel Time Logging (BlueTOAD) Benefits

Benefits to the City of Sandy Springs

- Systems monitoring and operations
- Alerts staff to abnormal or incident congestion
- Validate success of SCOOT deployment



© - TrafficCast and Florida Department of Transportation (FDOT)

Public SafetyPublic Works Collaboration

- **Neighborhood Safety Cameras** HD cameras installed throughout the city will be used to collect analytics for better managing traffic and safety-related concerns
- **License Plate Readers** (Operation Shield)- are being considered for deployment at gateway locations near the City Limits to be used to collect data for crime investigations and for origin/destination traffic studies.
- **UAV (drone) systems** will provide information for emergency management, public safety response, search and rescue, in addition to communications videos, and traffic and parking studies.

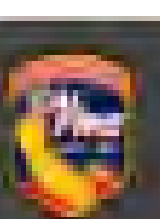


Integrating Systems (GIS and More)

- **Emergency Management GIS**
 - GIS Web applications
 - Drones – The Camp Fire
- **Informing your Community**
 - Open Data
 - Web Applications
- **Creative Partnerships:**
 - Working with Waze Data

The Camp Fire Paradise, California





Find address or place



(1 of 2)

Category of Damage to Structure

Damage Destroyed (>50%)
Structure Type Single Family Residence Single Story

Attachments:

[Photo1.jpg](#)

Created on 11/10/18 at 3:00 PM

[Zoom to](#)

Information

About

Field damage inspection is still ongoing and subject to change. The points shown in this map are being updated regularly. Data is subject to change as information is gathered and verified. The icons on the map indicate the current known status of the structure. If your structure is not identified by an icon, it has not yet been identified.

Addresses may be entered into search bar to find a specific location.

For additional information visit:

- CAL FIRE - [incident page](#)
- Butte County - [website](#)

Legend

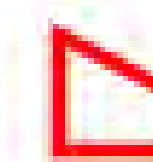
Damaged or Destroyed Structures

- Destroyed (>50%)
- Major (26-50%)
- Minor (10-25%)
- Affected (1-9%)

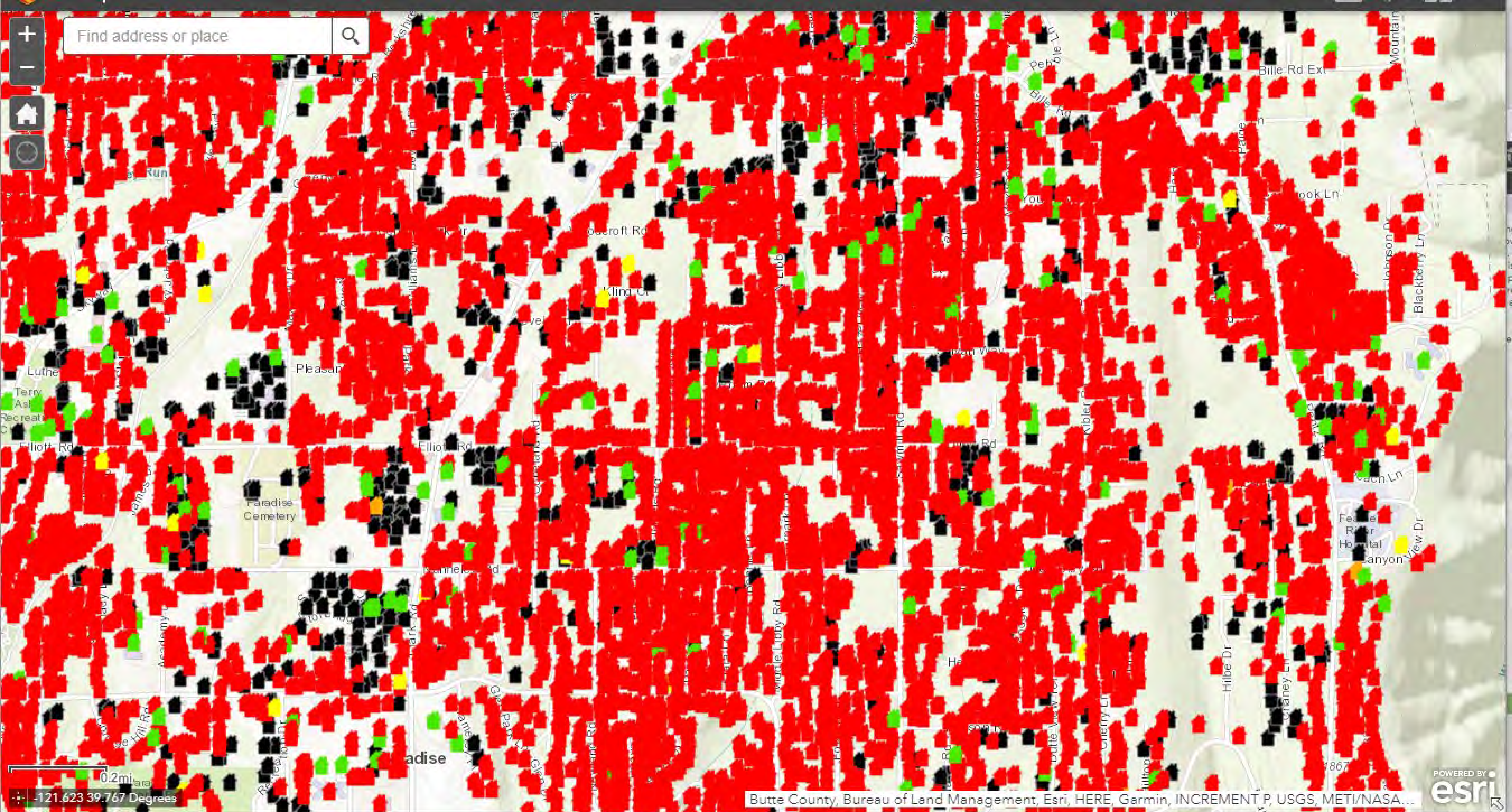
No Visible Damage

- No Visible Damage

Camp Perimeter 11-19







UAVs (drones) are no longer a dream

<https://camp-fire.dronedeploy.com/>



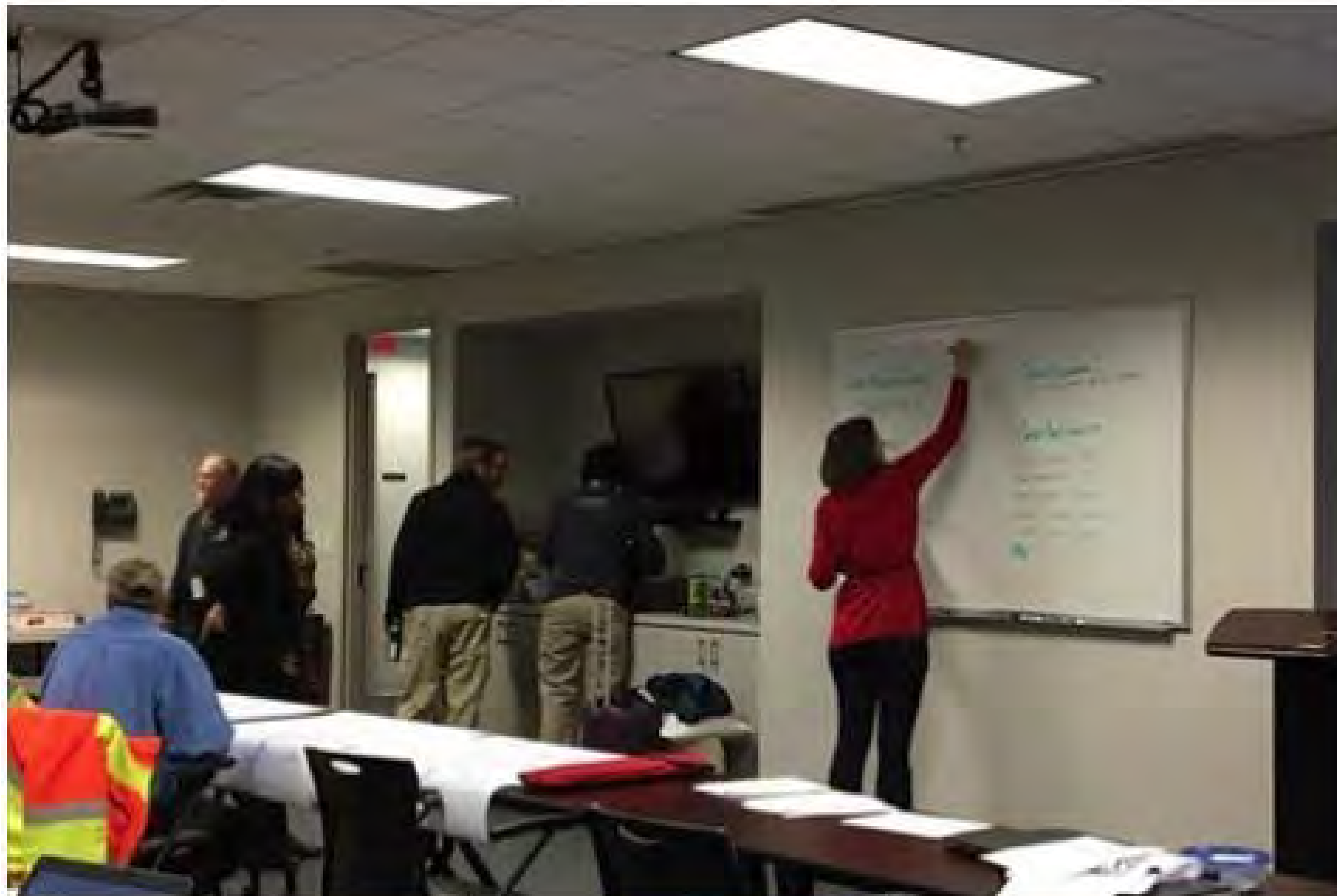
The background is a solid blue color with several large, overlapping, organic shapes in a slightly lighter shade of blue. These shapes are reminiscent of stylized leaves or flowing liquid, creating a sense of movement and depth. The text is centered horizontally and vertically.

Inform your community

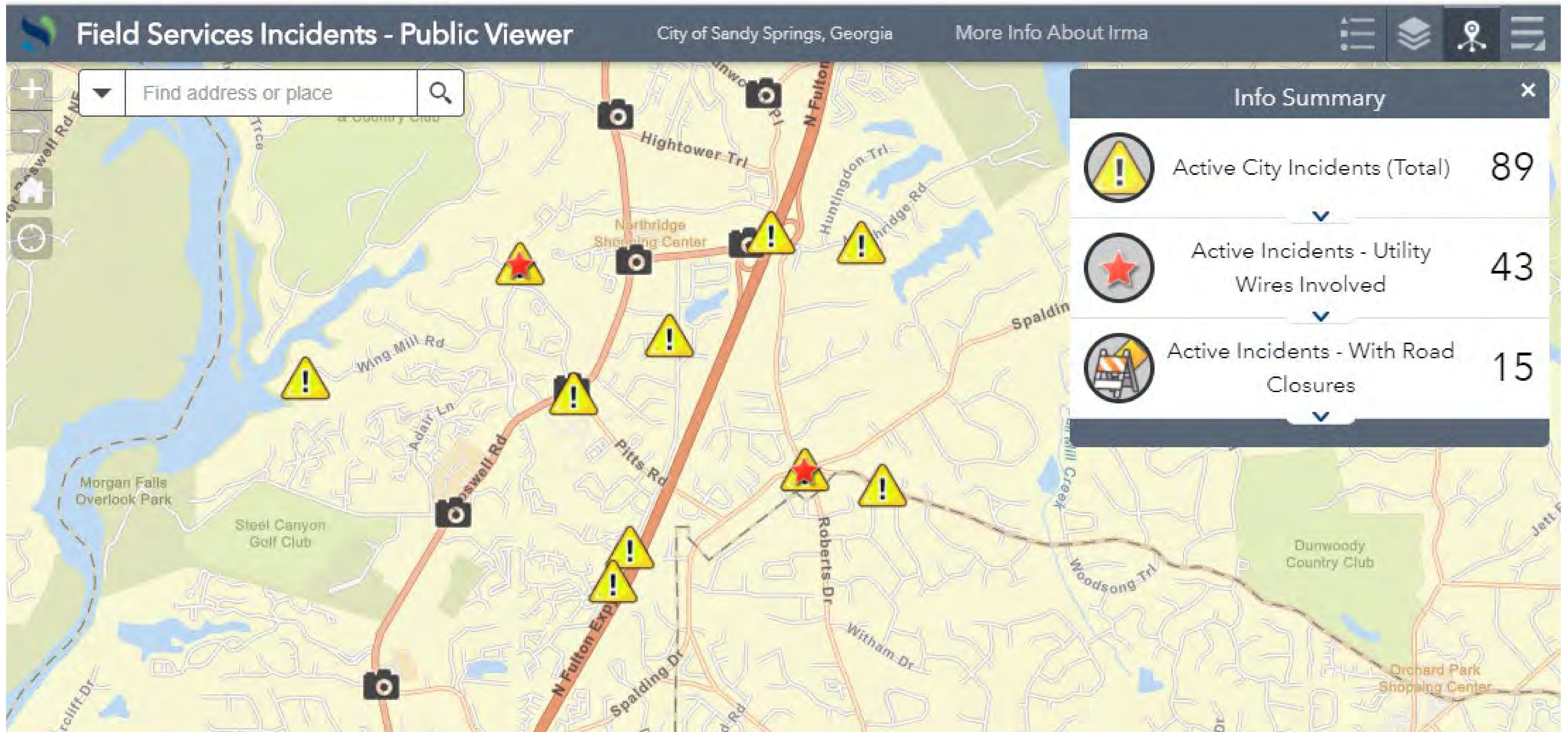
What's happening out there?



What's happening in the Emergency Operations Center?

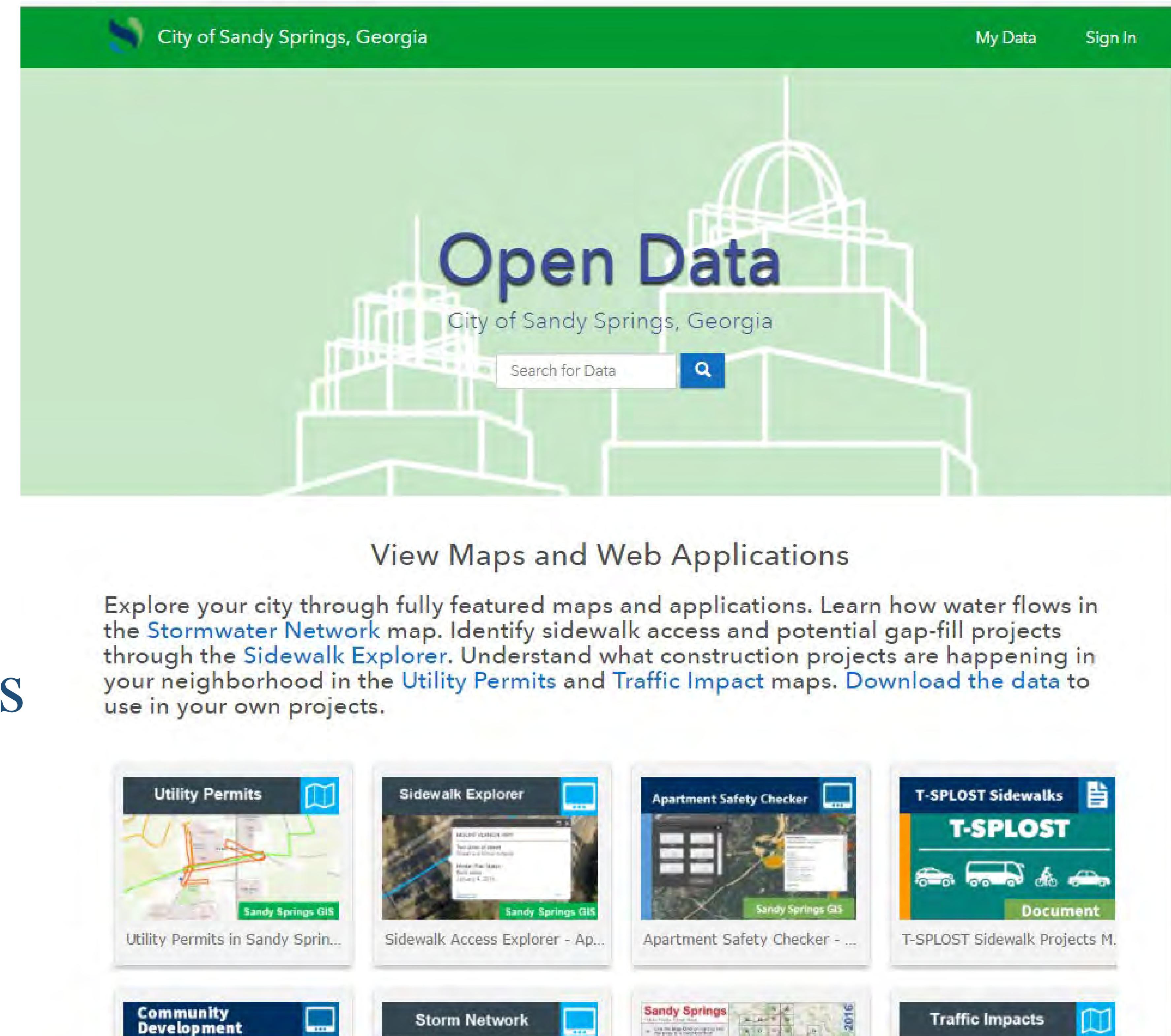


What does the public see?

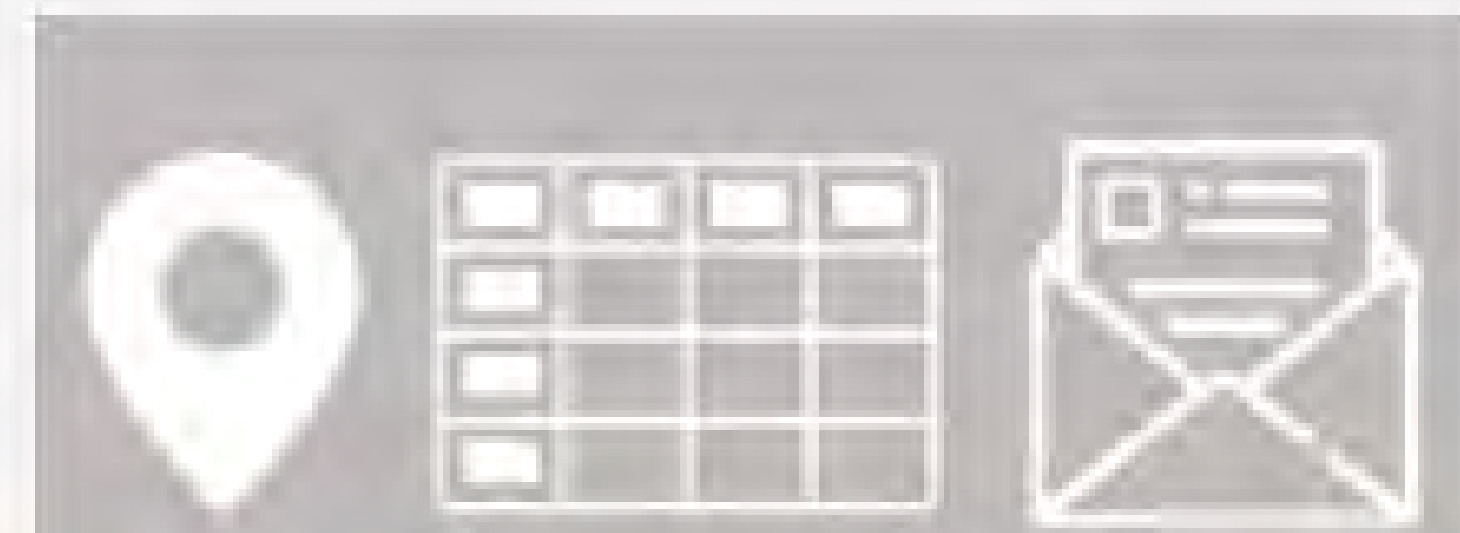


Open Data Portal and Application Gallery

- A Central Hub for Information
- Public Use
- Maps
- Applications
- Data Downloads
 - Developers, students, researchers
 - Partners
 - Other Agencies



Our Popular Applications



 **Mailing List Generator**

Mailing List Generator (App) ...



 **Utility Permits**

Utility Permits in Sandy Sprin...



 **Sidewalk Access Explorer**

Sidewalk Access Explorer - A...



 **Data Tile Downloader**

Data Tile Downloader (App) -...



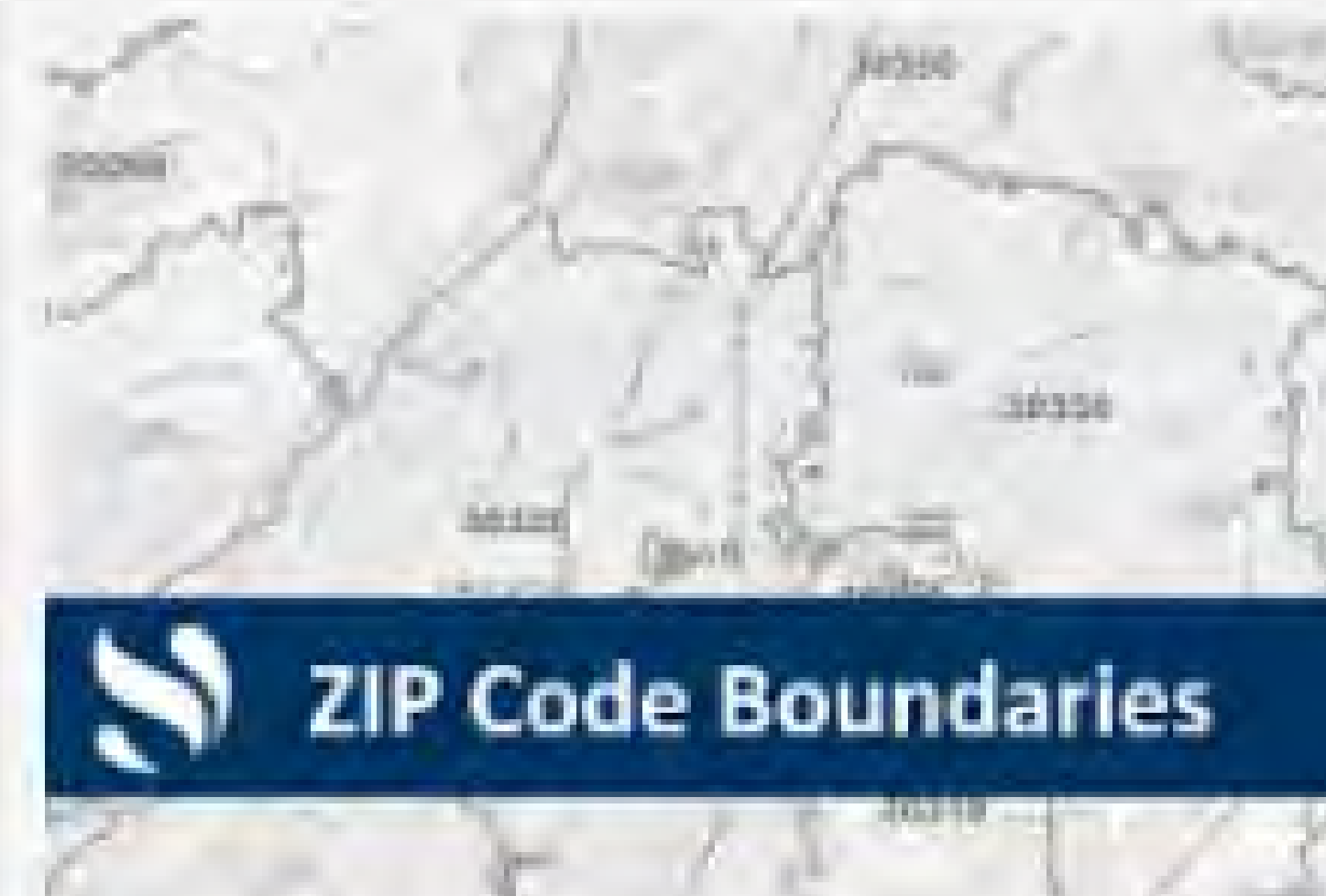
 **Traffic Count Locator**

Traffic Count Locator - Sandy...

Community Development

General Use application for Community Development including layers related to zoning and private development.

[View App](#)



 **ZIP Code Boundaries**

ZIP(+4) Code Boundaries Ex...



 **Apartment Safety 2017**

Apartment Safety Checker - ...



Inform your community
on the platforms they use

Private Partnerships (Waze)

- Waze Connected Citizens Program
- **We provide road closures**
 - planned and emergency
 - On our GIS platform
 - Integrated in their apps
- **We received data**
 - Reports
 - Traffic Jams



[https:// www.waze.com/ccp](https://www.waze.com/ccp)

Live Incident Management



Sandy Springs, GA
@SandySpringsGA

[Follow](#)

Clarification: ALL NORTHBOUND LANES OF ROSWELL ROAD FROM HIGHTOWER TRL TO HOPE RD ARE CLOSED

7:23 AM - 31 Jul 2017

[Comment](#) [Retweet](#) [Like](#)

Emergency Notifications

[police department](#) [fire rescue](#) [chatcomm 911 service](#) [emergency notifications](#)

**SANDY SPRINGS
ALERTS**

Sign up to receive Emergency Alerts and Notifications

Powered by Smart911

Traffic Alerts

Opt-in for Emergency Lane and Road Closures to know when traffic conditions have turned into gridlock. Opt-in to Weekly Traffic Alerts for a once a week notice about lane and road closures due to construction.

Emergency Notifications

Opt-in for Emergency Notifications to receive notices about severe weather, major power outages and other safety concerns that might arise in Sandy Springs.

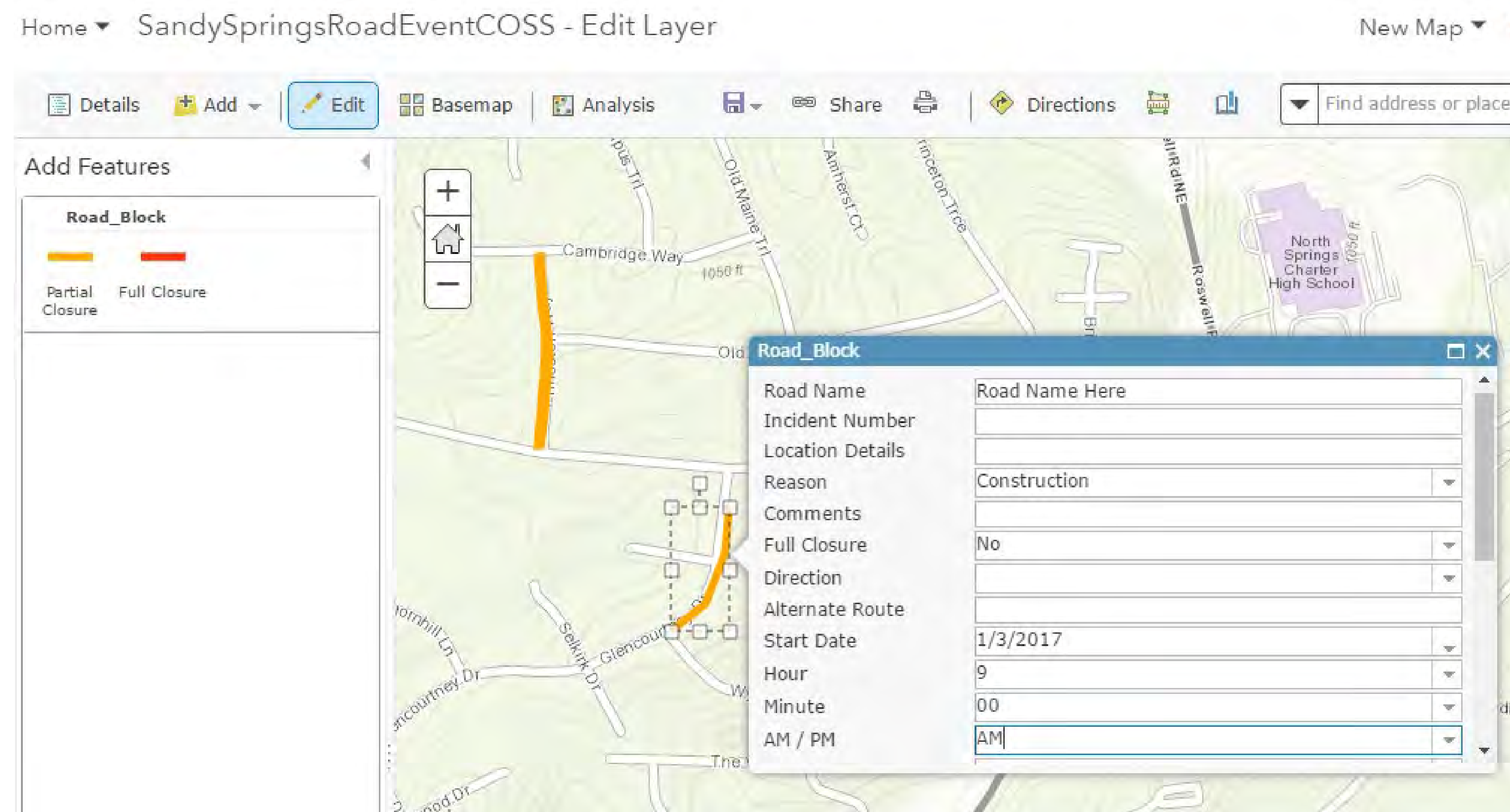
Smart911

When you register for Sandy Springs Alerts, you will have the option of adding personal information. The information is held by Smart911 and sent to responding public safety personnel when you dial 911 from a registered number. [Learn more >>](#)



Adding the closure

- In our GIS platform
- Or Waze map editor



waze MAP EDITOR

1 SEGMENT SELECTED

Roswell Rd, Sandy Springs, Georgia
SR-9, Sandy Springs

This segment has one or more road closures. Remove all road closures to edit it.

General Closures

DESCRIPTION
Crash w power pole. All NB blocked

DIRECTION
One way (B → A)

START
2017-07-31 10:36

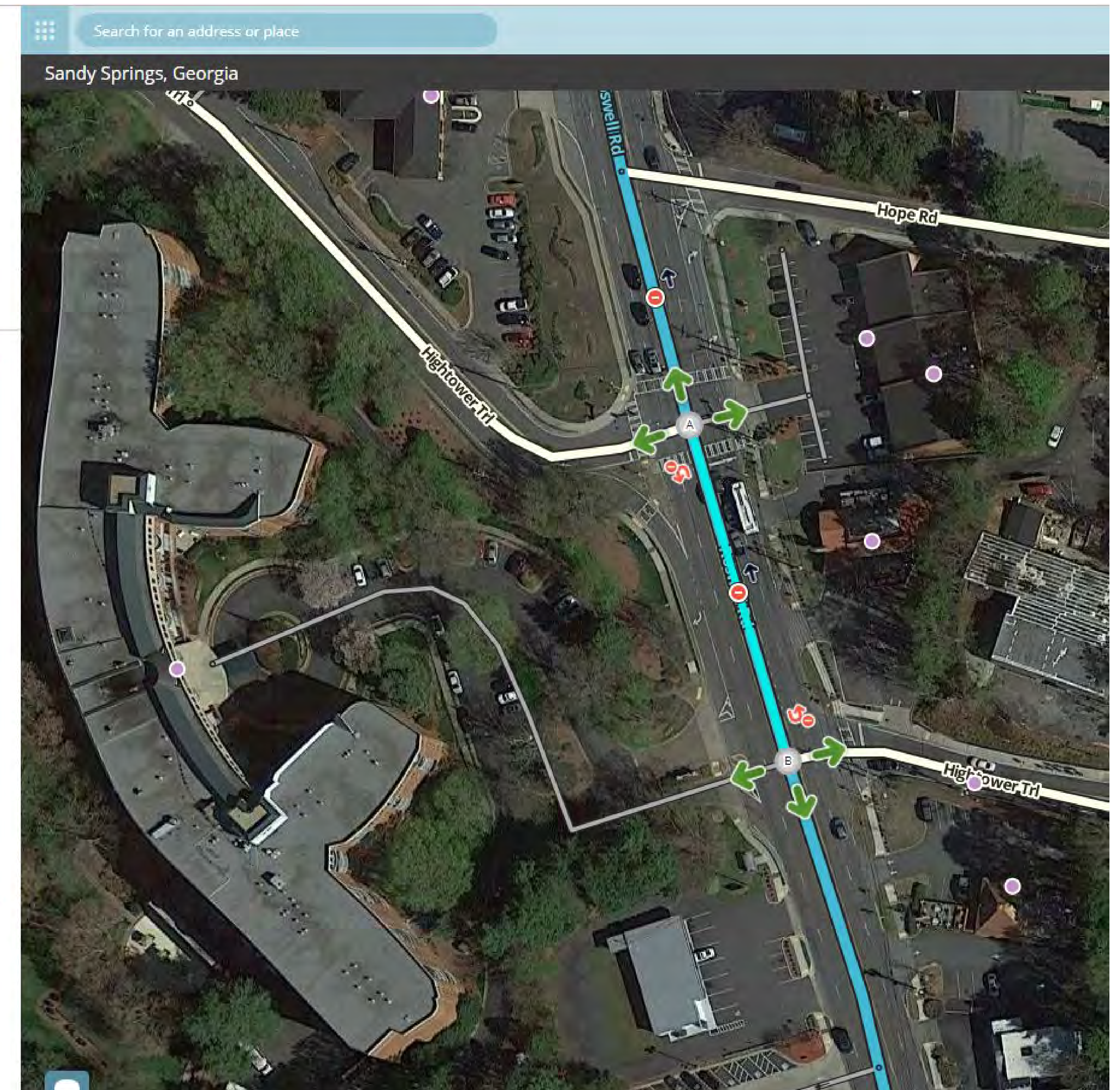
END
2017-07-31 12:30

EVENT
None

HOV/SERVICE ROAD ADJACENT

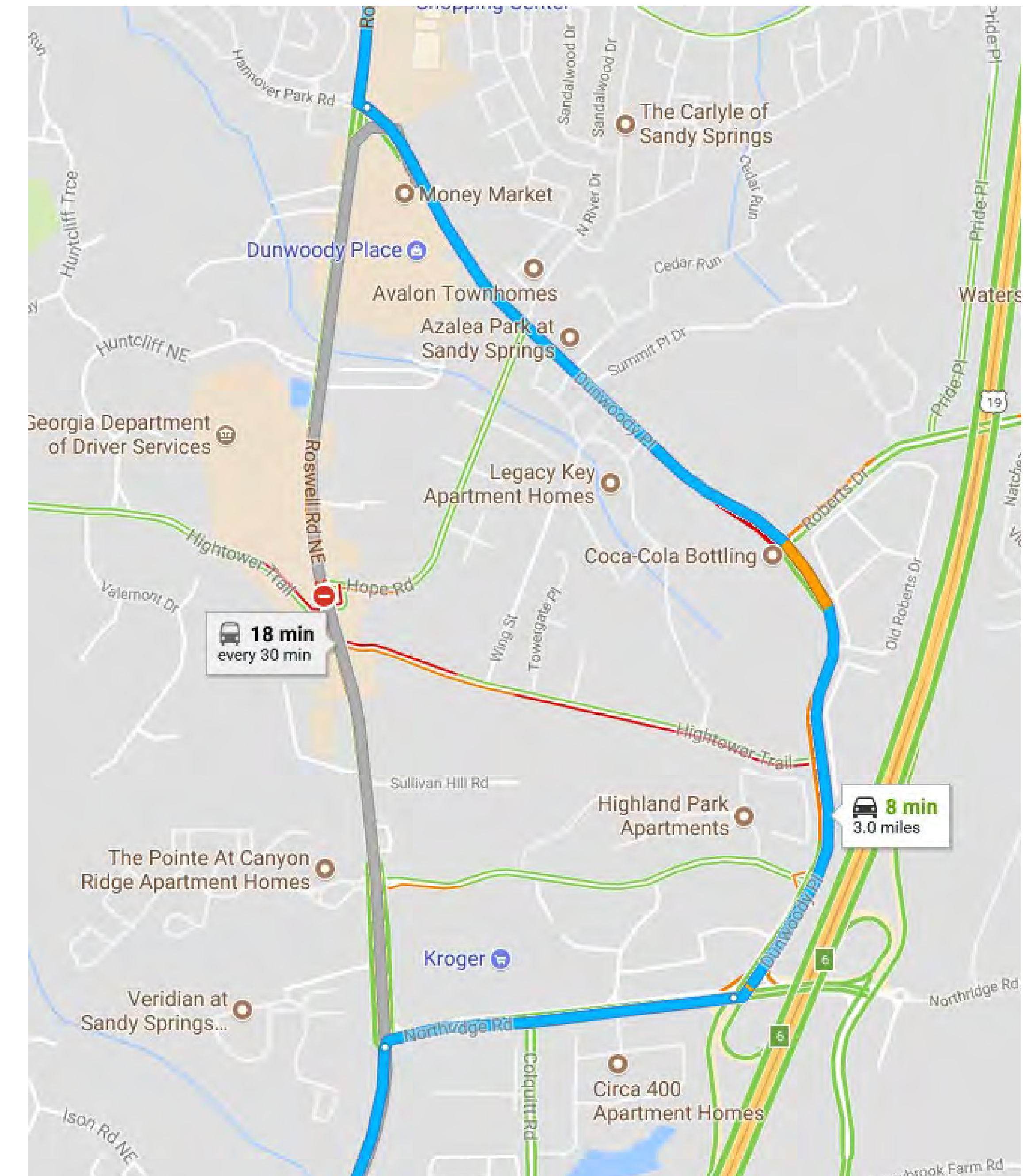
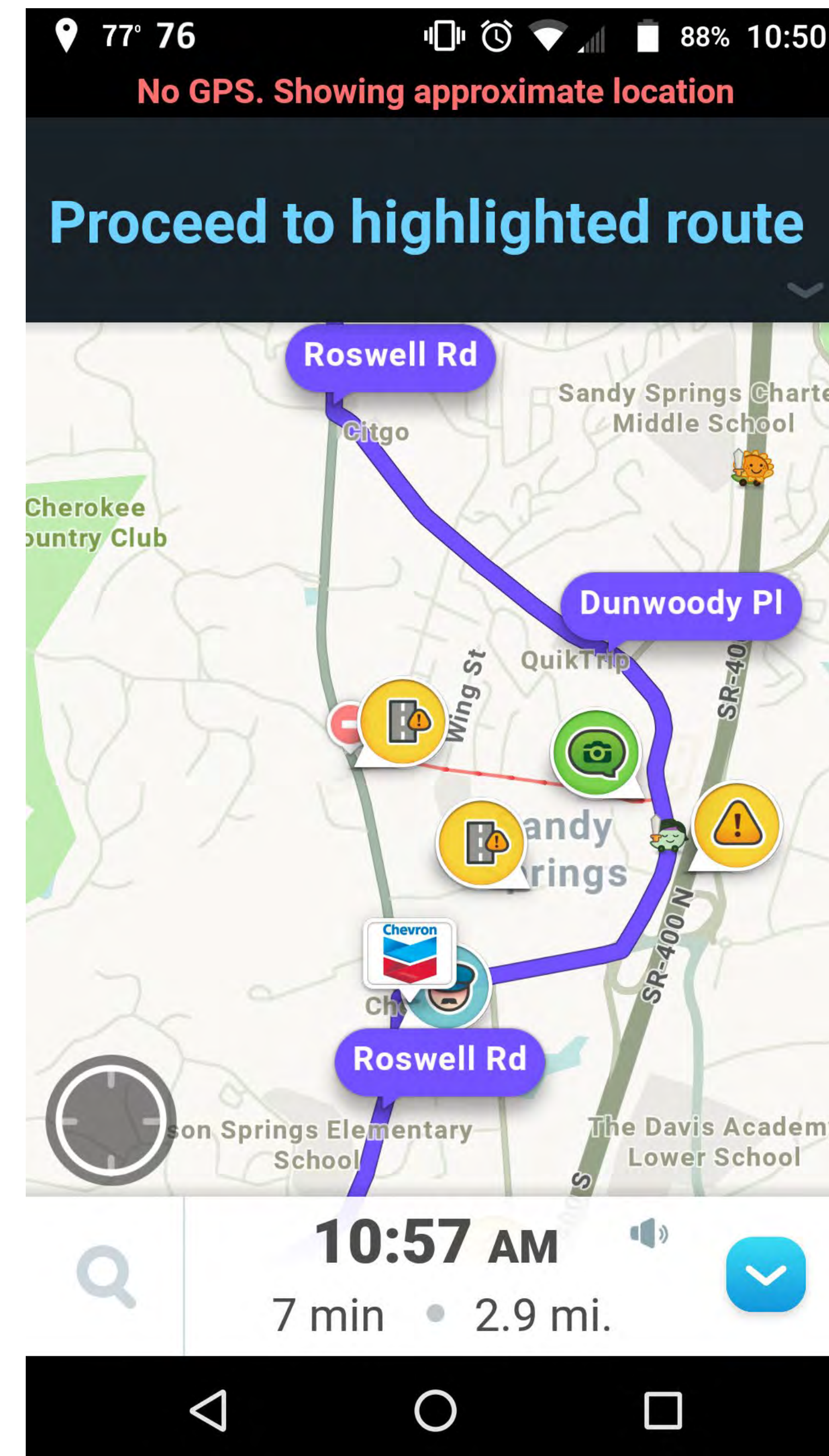
Updated: July 31, 2017 by SSpringsGA(1)
Created: July 31, 2017 by SSpringsGA(1)

Save Cancel



Routing around the event

- Within 15 minutes
- **Bring your data to your community** on the platforms they already use.
- Teamwork
 - Police, Fire, Communications, Public Works, GIS, Call Center,
 - Private Partners



Thank you.

Joe Gillis

Jgillis@sandyspringsga.gov

Langdon Sanders

Lsanders@sandyspringsga.gov